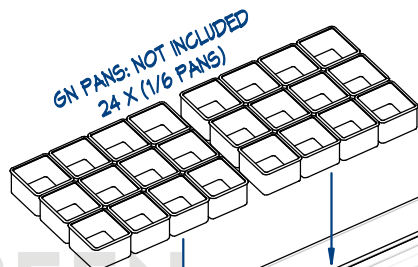
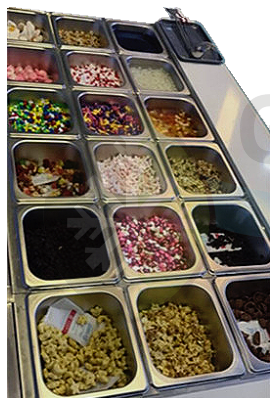




**SPECIFICATIONS:**

- MEGA Sandwich / Salad Preparation,
- 453-liter capacity
- DIMENSIONS: W1533 x D895 x H910,1121mm,
- 10 Amp GPO
- Stainless steel internal and front, top & sides external
- Cold airflow over food pans
- Insulated roll back cover, full-width cutting board
- One self-closing hinged doors. Adjustable shelving
- Rated up to 38°C Ambient Temperature, 60% RH
- 125mm diameter swivel castors with brakes on the front
- R134A Refrigerant
- Temperature range: 2°C to 5°C
- Net Weight: 144 kg



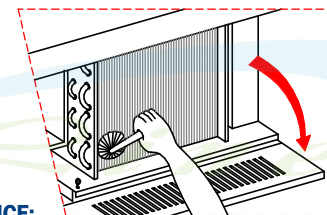
GN PANS: NOT INCLUDED  
24 X (1/6 PANS)

## COLD AIR BLOWN ON PREP BINES

- 240mm DEEP WHITE  
POLYTHYLENCE  
CUTTING BOARD

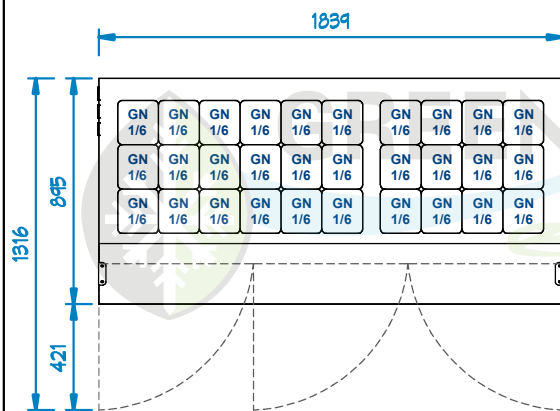
GN PANS:  
24 X (1/6 PANS)  
UP TO 150mm HIGH

— COLD AIR BLOWN UNDER  
PANS AND OVER PANS

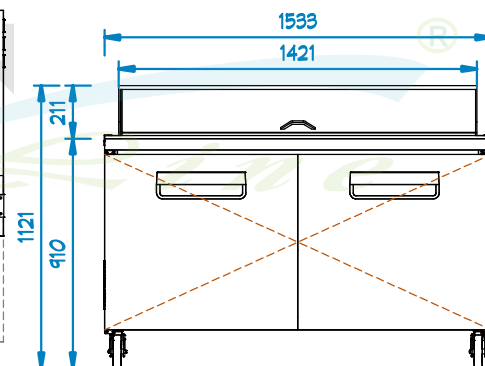
**MAINTENANCE:**

1. DISCONNECT THE POWER SUPPLY CABLE FROM MAINS,
2. CLEAN THE REFRIGERATOR WITH MILD DETERGENT AND DRY IT WITH SOFT CLOTH.
3. USE A BRUSH OR VACUUM CLEANER TO CLEAN THE CONDENSER.

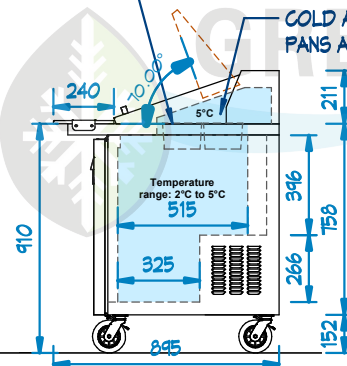
**IT IS ADVISABLE TO CLEAN THE CONDENSER  
ONCE A MONTH**



**TOP VIEW**  
scale 1:30 m



**FRONT VIEW**  
scale 1:30 m



**SIDE VIEW**  
scale 1:30 m

**THIS DRAWING MUST NOT  
BE SCALED**

THE CONTRACTOR SHALL VERIFY ALL DIMENSIONS, DATA AND LEVEL PRIOR TO THE COMMENCEMENT OF WORK. ALL ERRORS AND OMISSIONS BETWEEN THE DRAWINGS AND SPECIFICATION ARE TO BE REPORTED IMMEDIATELY

-----© Copyright of Hospitality Equipment 2020 Pty. Ltd.-----



lamber®



HE2020

HOSPITALITY EQUIPMENT 2020 PTY LTD

**HOSPITALITY EQUIPMENT**  
**2020 Pty. Ltd.**

## COMMERCIAL KITCHEN CONSULTANT

**A:** Unit 3/49-63 Victoria Street,  
Smithfield NSW 2164  
**P:** 02 9637 3737  
**E:** salesnsw@he2020.com.au  
**W:** www.he2020.com.au

DRAWING TITLE:

**GLSA2D15M**

DRAWN

DATE	MAY 16 2022
------	-------------

SCALE (A4)  
As indicated

PROJECT NO.	00
-------------	----

DRAWING NO.	07
-------------	----

REV. A1